

CP7769

$\frac{3}{4}$ " Impact Wrench



The Unrivaled
 $\frac{3}{4}$ " Impact Wrench

- ✓ **Lightweight**
- ✓ **Most compact in its class**
- ✓ **Better power controls**

**People.
Passion.
Performance.**



**Chicago
Pneumatic**

CP7769 – The Unrivaled 3/4" Impact Wrench

- Light weight, small size and better power controls
- Pleasant and enjoyable everyday use

COMPACT

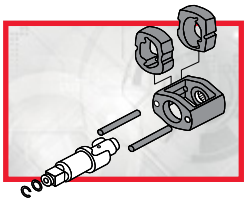
Length = 7.9 in. / 200 mm

LIGHTWEIGHT

6.9 lbs / 3.15 kg thanks to a composite motor housing for an improved operator comfort

HIGH DURABILITY

Twin Hammer mechanism



FLEXIBLE

360° swivel air inlet



MORE SECURED

Socket retainer ring combined with hole retainer

ERGONOMIC

All controls within reach

- Variable speed trigger
- One-hand power adjustment
- One-hand reverse system

CP7769: OLD & NEW VERSION



MORE ERGONOMIC

All controls within reach

→ LENGTH ←
reduced by 7%

⚖ WEIGHT
reduced by 7%

SAME POWER
1440 ft-lbs. / 1950 Nm

PART NUMBERS



Model	Type	Part #
CP7769	3/4" square drive impact wrench	894 107 7691
CP7769-6	3/4" sq. drive with 6" long anvil version	894 107 7697
CP7779	1" square drive impact wrench	894107 7791
For all models	Tune-up kit	894 017 5808

STANDARD 3/4" SOCKET SETS

Model	Part #	Type	Pc
SS618	894 016 4472	Standard - metric set (mm)	8
SS618D	894 016 4473	Deep - metric set (mm)	8
SS611DWS	894 016 7072	Sq & deep - metric set (mm)	11
SS008D	894 016 7073	Deep - imperial set (in.)	13

For more information, please contact your Chicago Pneumatic partner.



www.cp.com